

Caproco wire loop and tube loop electrical resistance (ER) probes come supplied with standard flow deflectors, which are also available as an option for ER tubular probes. Flow deflectors serve three primary functions:

- protect the element from physical damage, such as a collision with hydrates or other particles in the line
- preserves element life by blocking most of the media flow from eroding the probe element
- allows for the attachment of corrosion coupons with the addition of a flow deflector with an integrated coupon holder

APPLICATION

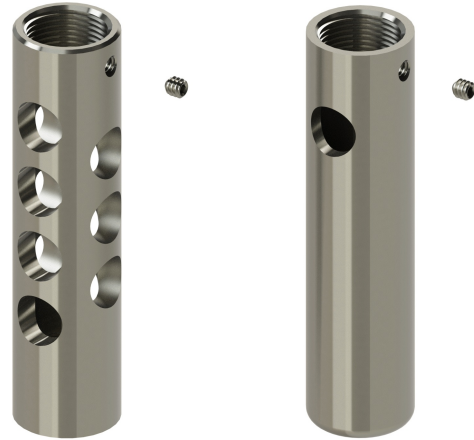
Flow deflectors are available for either normal or high velocity flow environments. Threaded so that they can be attached to the probe body around the element, the cylindrical flow deflector body has perforations in a pattern that disperses the flowing media, allowing only a small percentage to reach the element at a slower rate, permitting a reading to take place.

In situations where both electronic and coupon corrosion monitoring is desired at a single point, Caproco has designed flow deflectors with integrated coupon holders.

SPECIFICATIONS

Standard flow deflectors are manufactured from AISI 1018 mild steel or 316 stainless steel, and are also available in alternative materials upon request.

Maximum Operating Pressure	3,600 / 6,000 psi (24.8 / 41.4 MPa)
Maximum Operating Temperature	500°F (260°C)



Standard

High Velocity



Flow Deflector on Tubular Probe

ER PROBE TYPE	MATERIAL	FLOW DEFLECTOR		FLOW DEFLECTOR WITH	
		STANDARD (P/N)	HIGH VELOCITY (P/N)	STRIP COUPON HOLDER	FLUSH DISC COUPON HOLDER
Tubular Retrievable, Retractable & Fixed					
T10	1018 Mild Steel	99008	99016	99029	
T20 (4")	1018 Mild Steel	99007	99022	99020	99028
T50	1018 Mild Steel	99043		99035	
Wire Loop Retrievable, Retractable & Fixed					
W40, W80	316 SS	99009	99013		
Tube Loop Retrievable, Retractable & Fixed					
TL4, TL8	316 SS	99009	99013		

CONTACT CAPROCO FOR SIZING AND PART NUMBER INFORMATION

